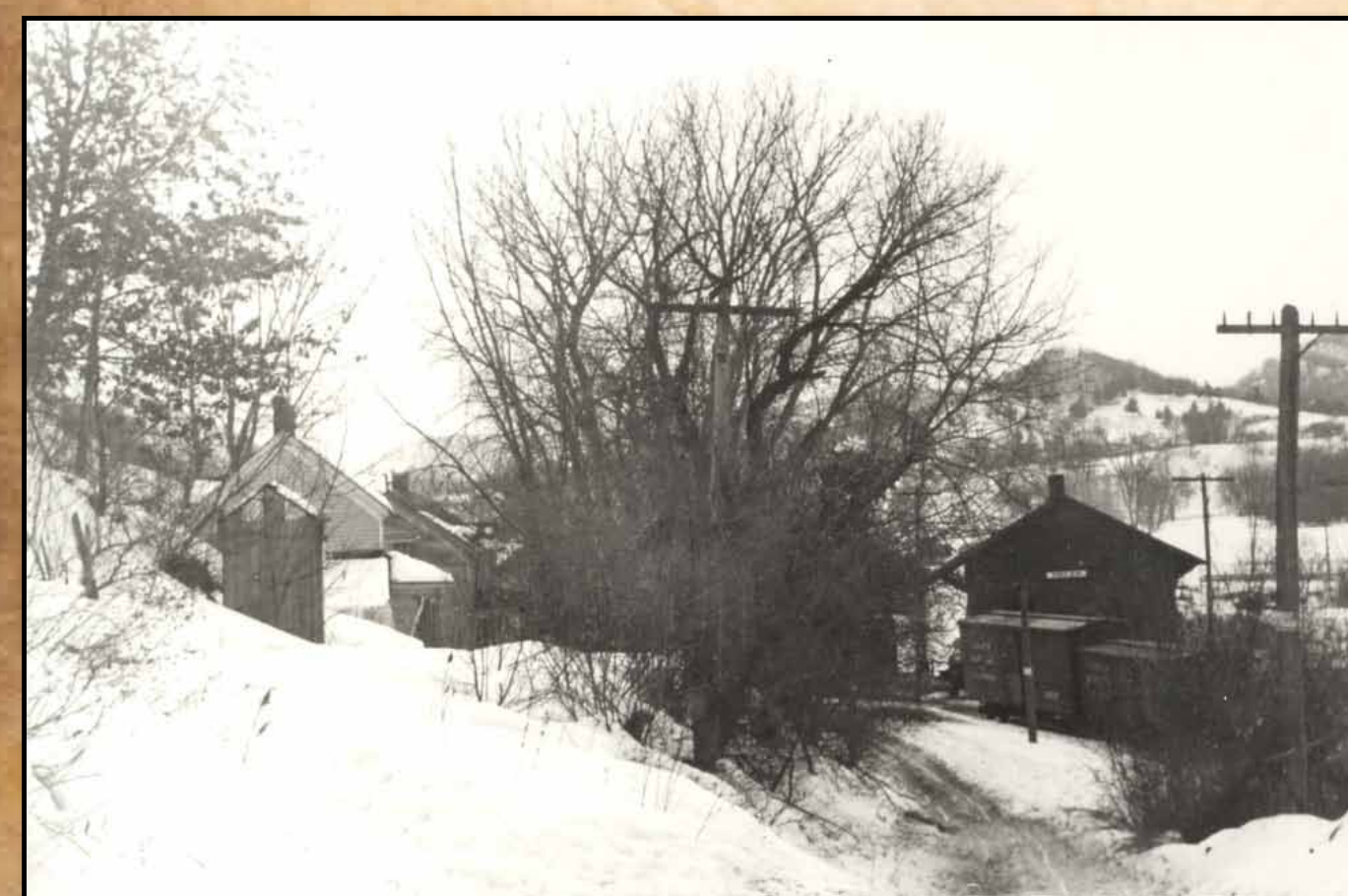


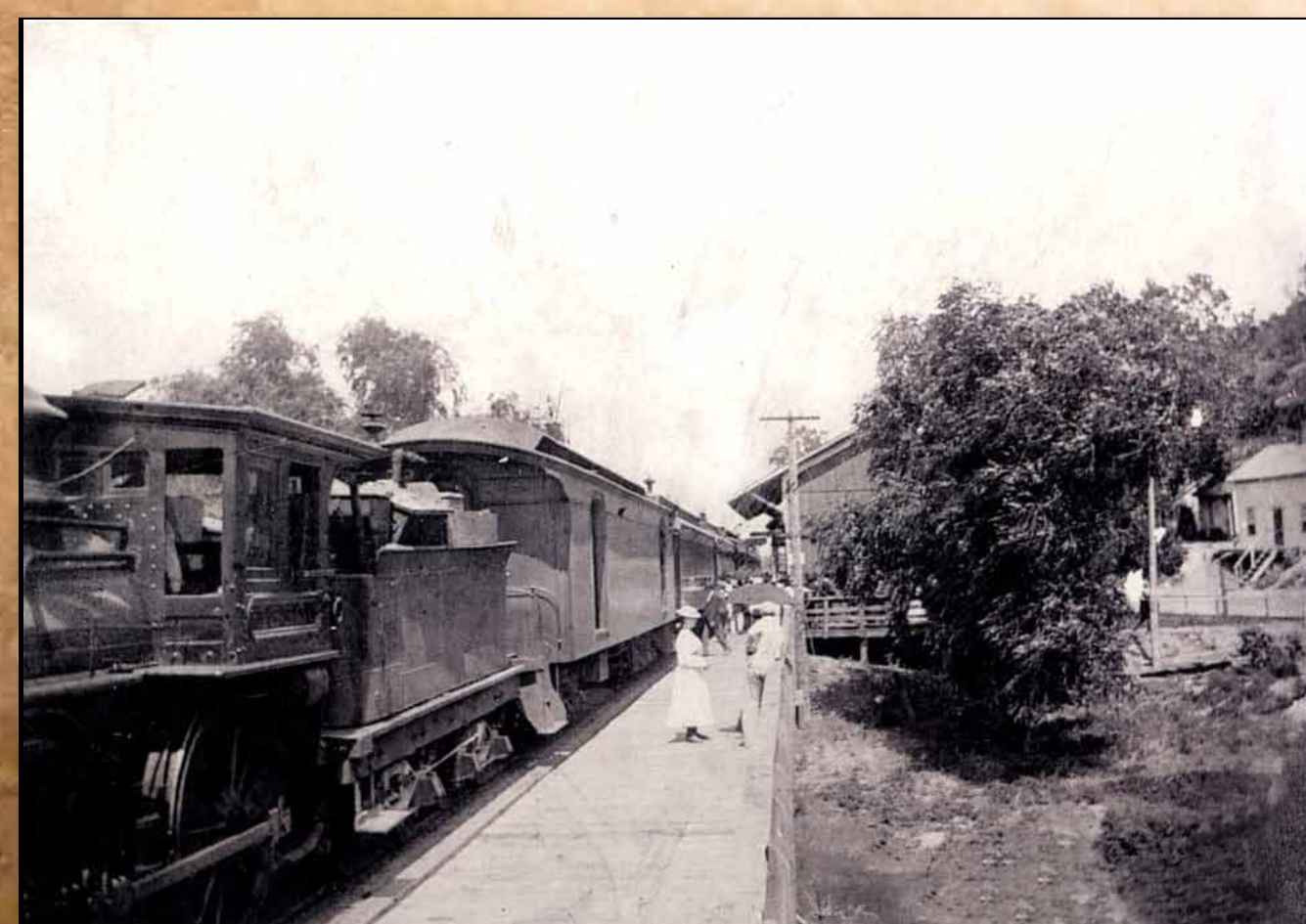
NORTH HOKAH



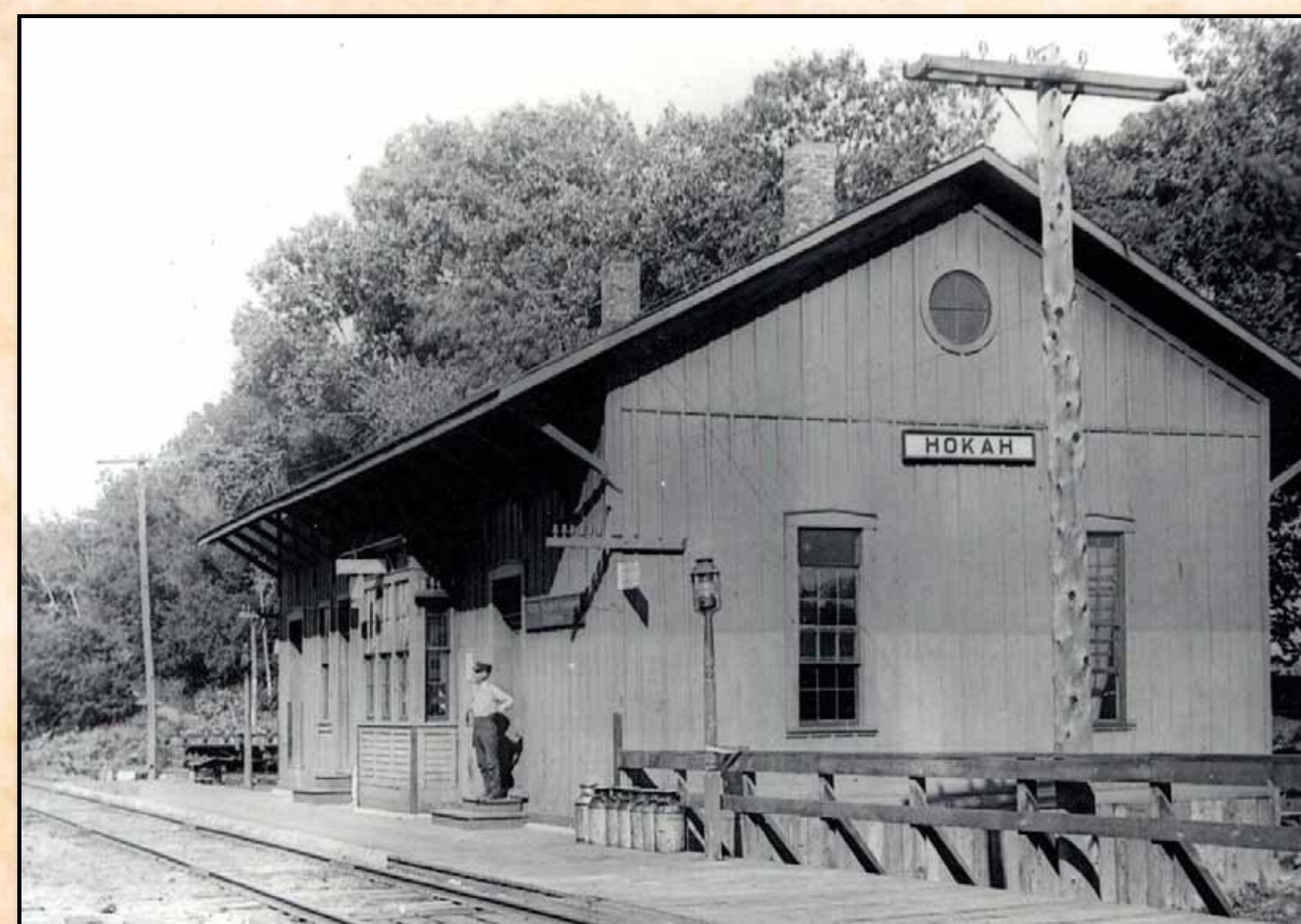
From Mt. Tom



Scene in Depot area



Trains brought visitors to spend the day at Lake Como



This Heritage Sign is on former railroad bed Depot was located across Thompson Creek on County 7 roadway



Depot circa 1900
Built in 1873 closed in 1957

Hokah Heritage Signs Project 2011
Series of six signs depicting the
City of Hokah's historic landmarks



1949-1965
Museum was on
Hwy 16 near Root
River bridge



Elevator along Root River