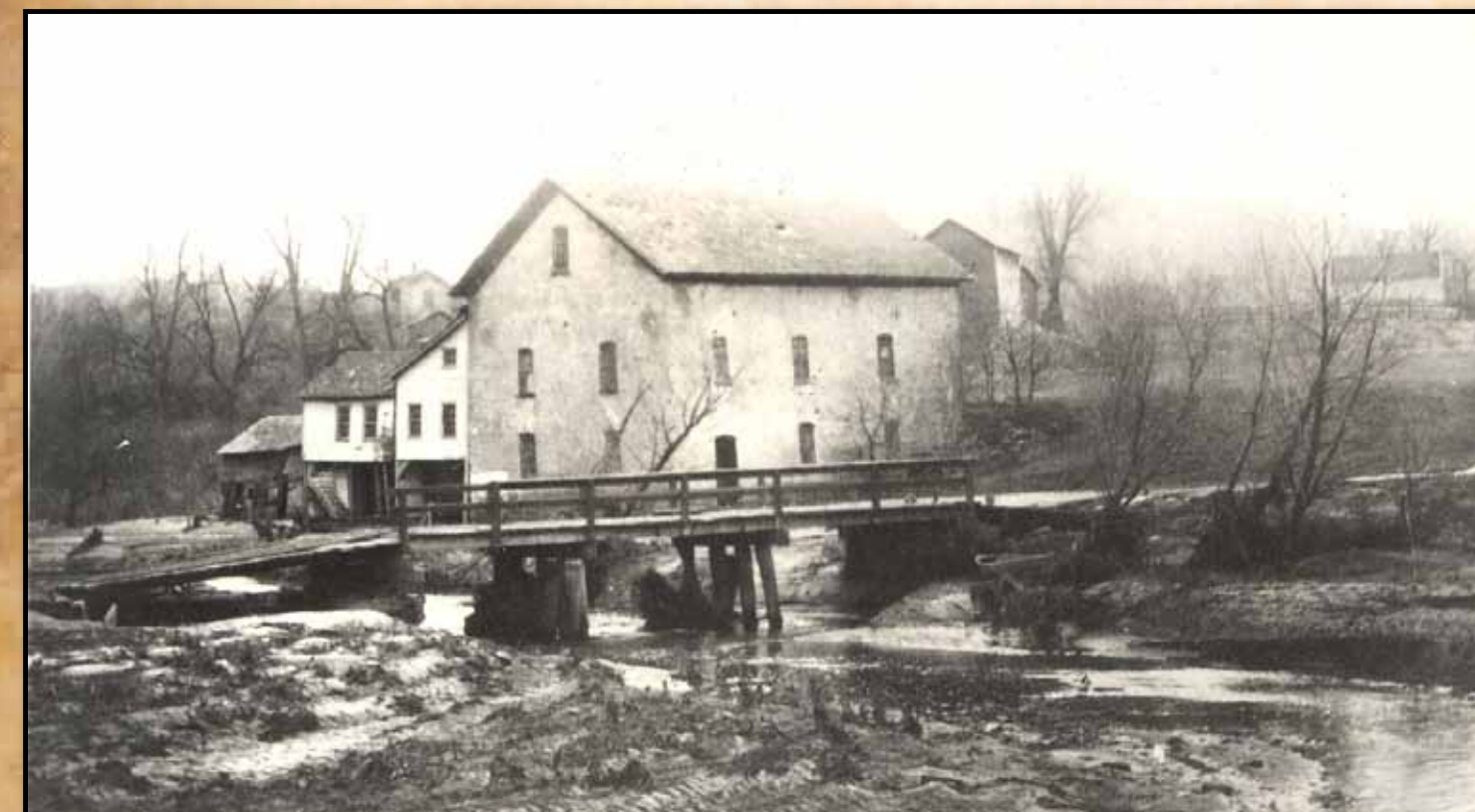
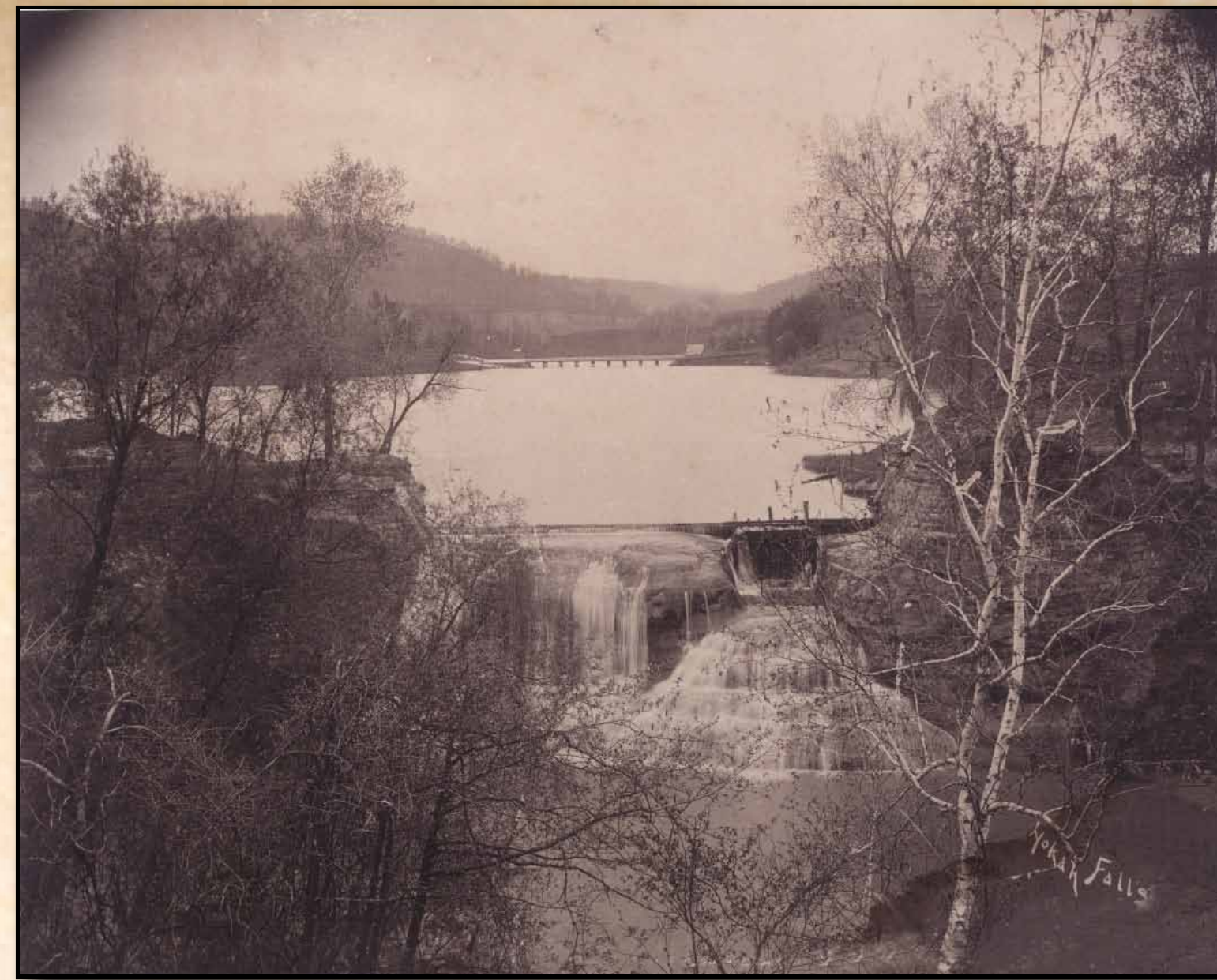


FIRST LAKE COMO & NORTH HOKAH

Hokah Heritage Signs Project 2011
Series of six signs depicting the
City of Hokah's historic landmarks



First Lake Como , 1852 - 1909, washed out in flood of August 1909



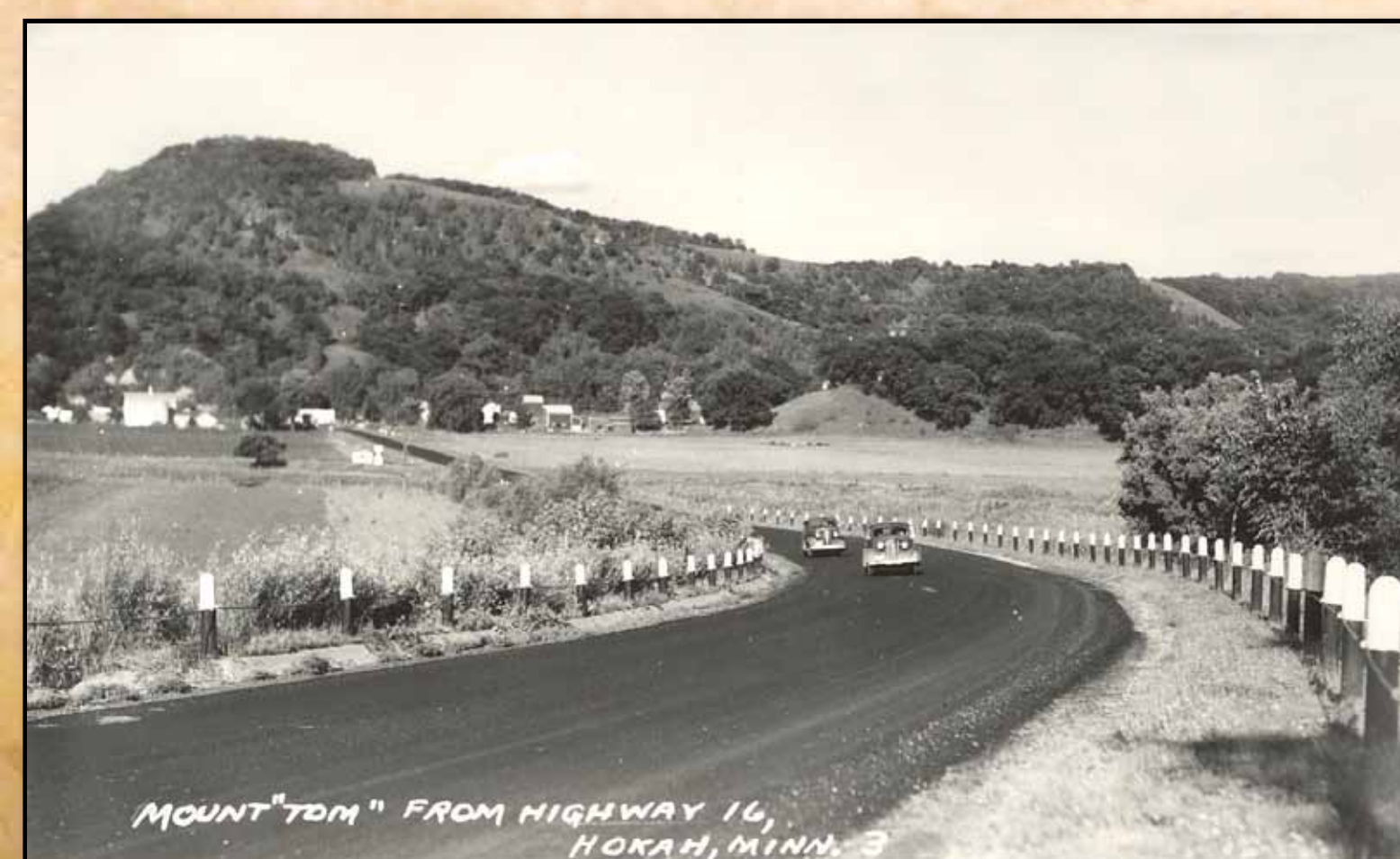
Weber Mill built in 1873



Hokah Midget Mill built in 1914 on site of Weber Mill
Razed in 1990 for new Fire Station



Southern Minnesota Railroad shops razed in 1880
were located NW of Hwy 16 & 44 junction



Mid 1940's view of North Hokah



Horseshoe Bar, later Junction Inn destroyed
by flood of August 2007 was located west of
Thompson Creek on Hwy. 16



Built in 1927 view is from 1940's - 1950's

